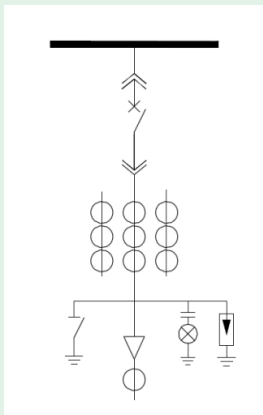




12/24kV

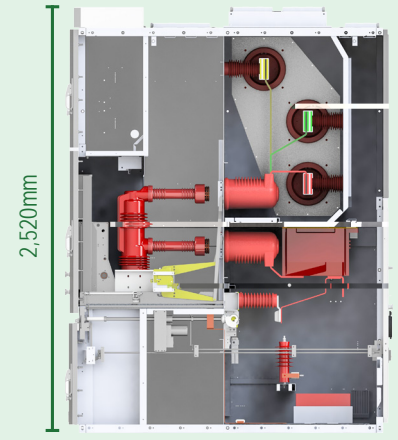
Removable Metal - enclosed Switchgear



800/1,000/1,200mm



12kV 1,450-1,750mm



24kV 1,800-2,400mm

Product description

Electrical features

Temperature-rise tests:

Altitude:

Durable:

Reliable:

Automation and remote control:

Technical specification

		()	()
		()	()

Optional intelligent modules

